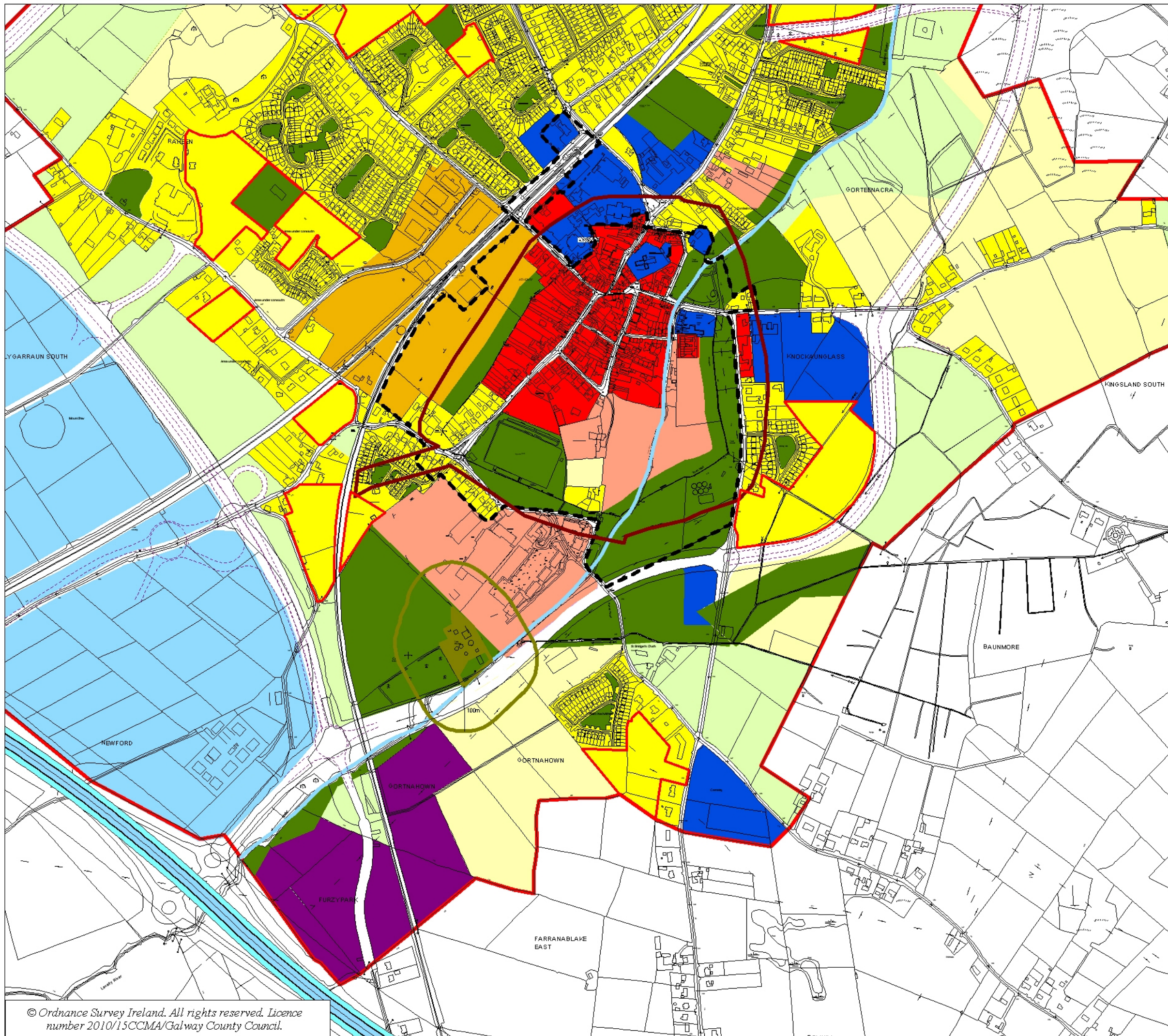


- Local Area Plan Boundary
- R - Residential.
- R - Residential (Phase 1)
- R - Residential (Phase 2)
- C1 - Town Centre / Commercial.
- C2 - Commercial / Mixed Use.
- BE - Business and Enterprise.
- BT - Business and Technology
- I - Industrial
- CF - Community Facilities
- OS - Open Space / Recreation & Amenity
- A - Agriculture
- PU - Public Utilities
- Buffer Zone
- TI - Transport Infrastructure

- [ZAPS] - Zone of Archaeological Potential
- [ACA] - Architectural Conservation Area
- M6 Motorway
- Proposed Athenry Relief Road / Relief Streets
- River Clarin

NOTE:
 This Map should be read in conjunction with Maps 2A/2B Specific Objectives, Maps 3A/3B Indicative Flood Risk Management Areas and the policies, objectives and guidelines outlined with Section 2 and Section 3 of the plan, including those in relation to land use management and zoning.





- Local Area Plan Boundary
- R - Residential.
- R - Residential (Phase 1)
- R - Residential (Phase 2)
- C1 - Town Centre / Commercial.
- C2 - Commercial / Mixed Use.
- BE - Business and Enterprise.
- BT - Business and Technology
- I - Industrial
- CF - Community Facilities
- OS - Open Space / Recreation & Amenity
- A - Agriculture
- PU - Public Utilities
- Buffer Zone
- TI - Transport Infrastructure

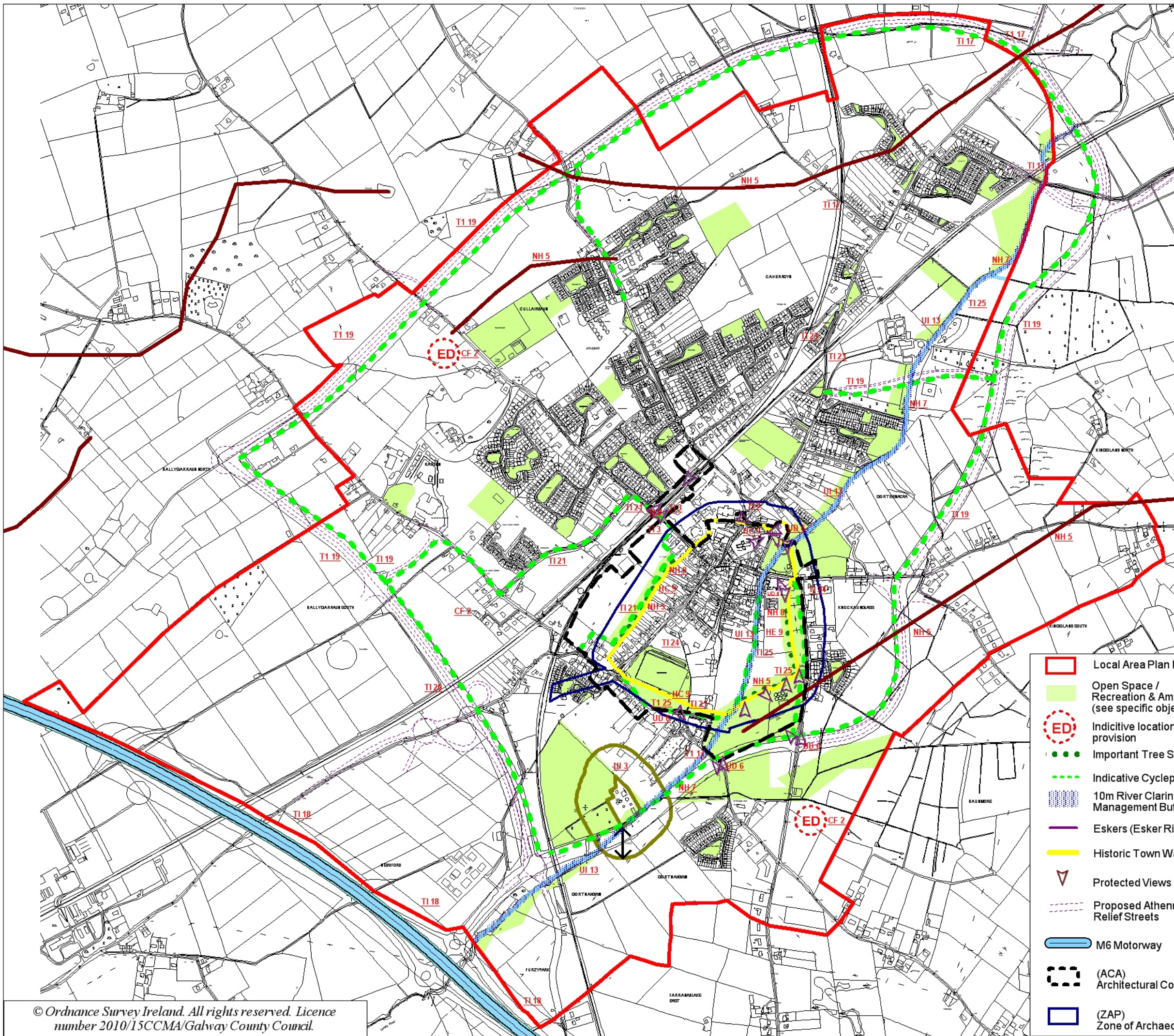
- [ZAPS] - Zone of Archaeological Potential
- [ACA] - Architectural Conservation Area
- M6 Motorway
- Proposed Athenry Relief Road / Relief Streets
- River Clarin

NOTE:
 This Map should be read in conjunction with Maps 2A/2B Specific Objectives, Maps 3A/3B Indicative Flood Risk Management Areas and the policies, objectives and guidelines outlined with Section 2 and Section 3 of the plan, including those in relation to land use management and zoning.



**ATHENRY LAP 2012
 PLAN ADOPTED 25/6/2012
 MAP 1B LAND USE ZONING
 (TOWN CENTRE)**

© Ordnance Survey Ireland. All rights reserved. Licence number 2010/15CCMA/Galway County Council.



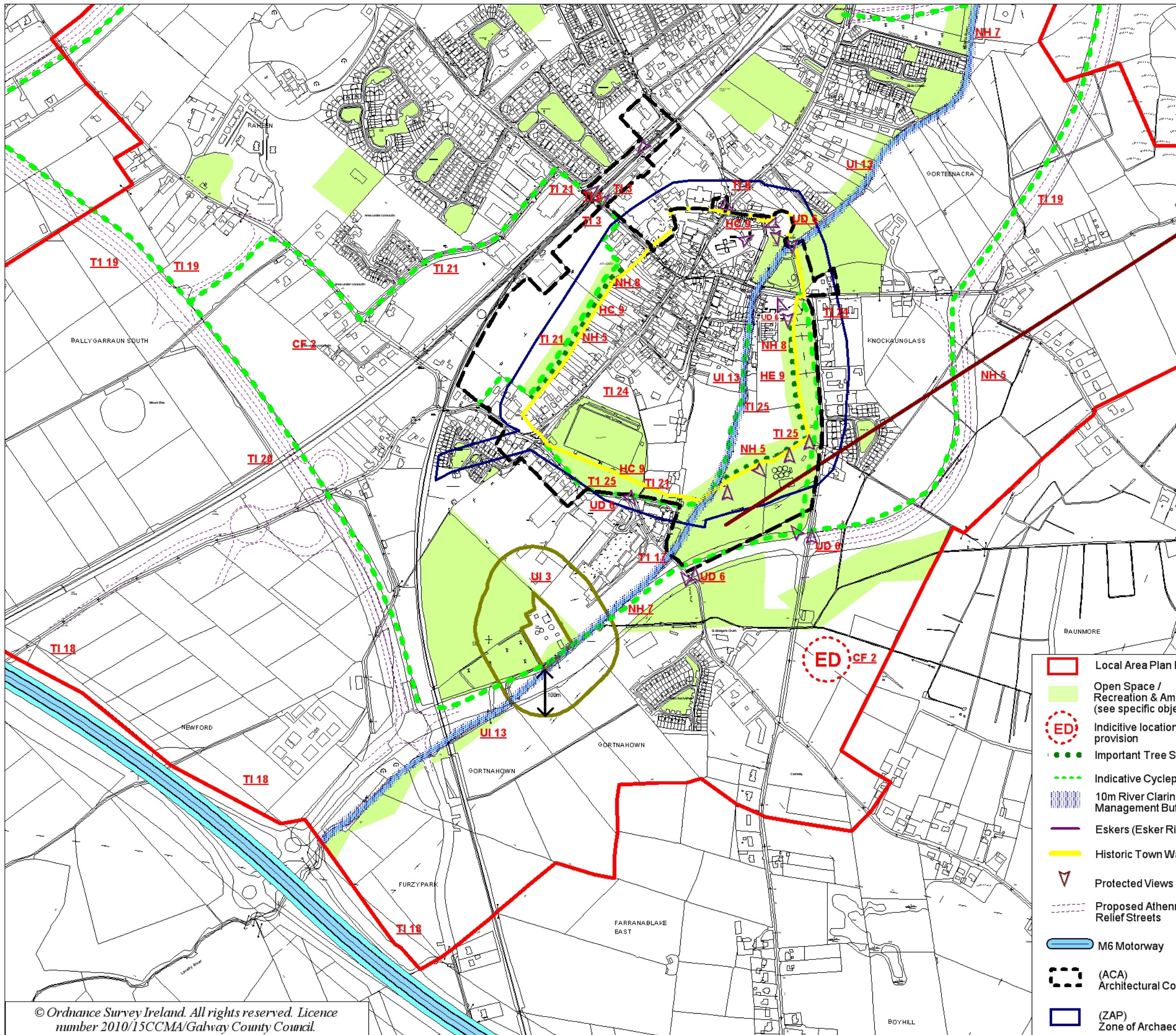
Objective Key	Objective Description
S.3.3.2 Community Facilities & Amenity Objectives	Indicative locations for new school provision
CF2	S.3.6.2 Sustainable Transportation
TI 3	<ul style="list-style-type: none"> Support the provision of an integrated public transportation facility/hub & ancillary services. Enhance public access between the Railway Station & its existing parking facilities. Support the provision of parking facilities in proximity to public transportation nodes
TI 8	Facilitate provision of pedestrian crossings adjacent to schools, at other appropriate locations e.g. Athlery Rail Station to its existing parking facilities.
TI 17	S.3.6.2 Roads, Streets & Parking
TI 18	Support the development of - road schemes/improvements, road bridges, road/rail crossings within the Plan Area.
TI 19	M6 Ballinasloe - Galway: <ul style="list-style-type: none"> Min 90m building setback in areas where a speed limit greater than 50kph applies (>50kph).
TI 19	Athlery Relief Road/Relief Streets: <ul style="list-style-type: none"> Min 25m setback in areas where a speed limit greater than 50kph applies (>50kph). No minimum building setback in areas of 50kph or less. Provide a 3m wide cycleway/pedestrian way as part of the provision of the Athlery Relief Road.
TI 20	Provide a new road and over-bridge from the M6 link road to the Cashla Road as part of the Athlery Relief Road/Relief Streets.
TI 21	Reserve a cycleway/pathway from Business and Technology Park (BT) zoning, Cashla Road, IDA ring road to the Railway Station. Support the development of other pedestrian and cycling linkages where appropriate.
TI 23	Improve the bridges over the railway lines by making better provision for pedestrian access.
TI 24	Provide long stay parking facilities at Backlawn & Knockaunglass.
TI 25	Provide a walkway along River Clarin. Continue to provide a walkway around the historic Town Walls.
UI 3	S.3.6.2 Water Supply, Wastewater & Surface Water
UI 13	Provide and protect a 100m buffer around the wastewater treatment plant site. Protect buffer zones around any other treatment plant in the town as appropriate.
UI 13	Protect waterbodies and watercourses within the Plan Area from inappropriate development, including rivers, streams, associated undeveloped riparian strips and natural floodplains. This will include a 10m environmental management buffer on either side of the River Clarin and its tributary, measured from the near river bank. Prevent culverting/realignment, where possible.
UD 8	3.7.2 Urban Design & Place-making
UD 8	Protect all views/prospects of significance – the Town Walls, the Castle, St. Mary's Collegiate Church, Dominican Priory or others that will block or interfere with a significant view or prospect.
HC 8	3.8.2 Built Heritage & Cultural Heritage
HC 8	Require archaeological assessment for development within or in close proximity (30m) of the Zone of Archaeological Potential, within 30m of other recorded monuments (RMPs) and in close proximity of any national monuments including Athlery's historic walls.
NH 5	3.9.2 Natural Heritage & Biodiversity
NH 5	Support the protection of biodiversity and ecological connectivity including woodlands, trees, hedgerows, rivers, streams, wetlands, stone walls, other landscape features such as Esker Riada, where these form part of the ecological network. Seek to retain and/or incorporate these natural features into developments, in order to avoid ecological fragmentation and maintain ecological corridors.
NH 7	Limit development within the environmental management buffer. Seek to ensure that a minimum setback of 10 metres is maintained on either side of the River Clarin, save for exceptional circumstances & where this setback is not feasible.
NH 8	Protect important tree clusters and hedgerow in the Plan Area and ensure that development proposals take cognisance of significant trees/tree stands. Seek to retain natural boundaries including stone wall, hedgerow and tree boundaries, where possible.

- Local Area Plan Boundary
- Open Space / Recreation & Amenity (see specific objective CF 4)
- Indicative locations for school provision
- Important Tree Stands
- Indicative Cyclepath / Walkways
- 10m River Clarin Environmental Management Buffer
- Eskers (Escher Riada)
- Historic Town Walls
- ▼ Protected Views
- Proposed Athlery Relief Road / Relief Streets
- M6 Motorway
- (ACA) Architectural Conservation Area
- (ZAP) Zone of Archaeological Potential

Note:
This map should be read in conjunction with Maps 1A/1B Land Use Zoning; Maps 3A/3B Indicative Flood Risk Management Areas and the policies, objectives and guidelines outlined with Section 2 and Section 3 of the plan, including those in relation to land use management and zoning.



**ATHLERY LAP 2012
PLAN ADOPTED 25/6/2012
MAP 2A SPECIFIC OBJECTIVES**



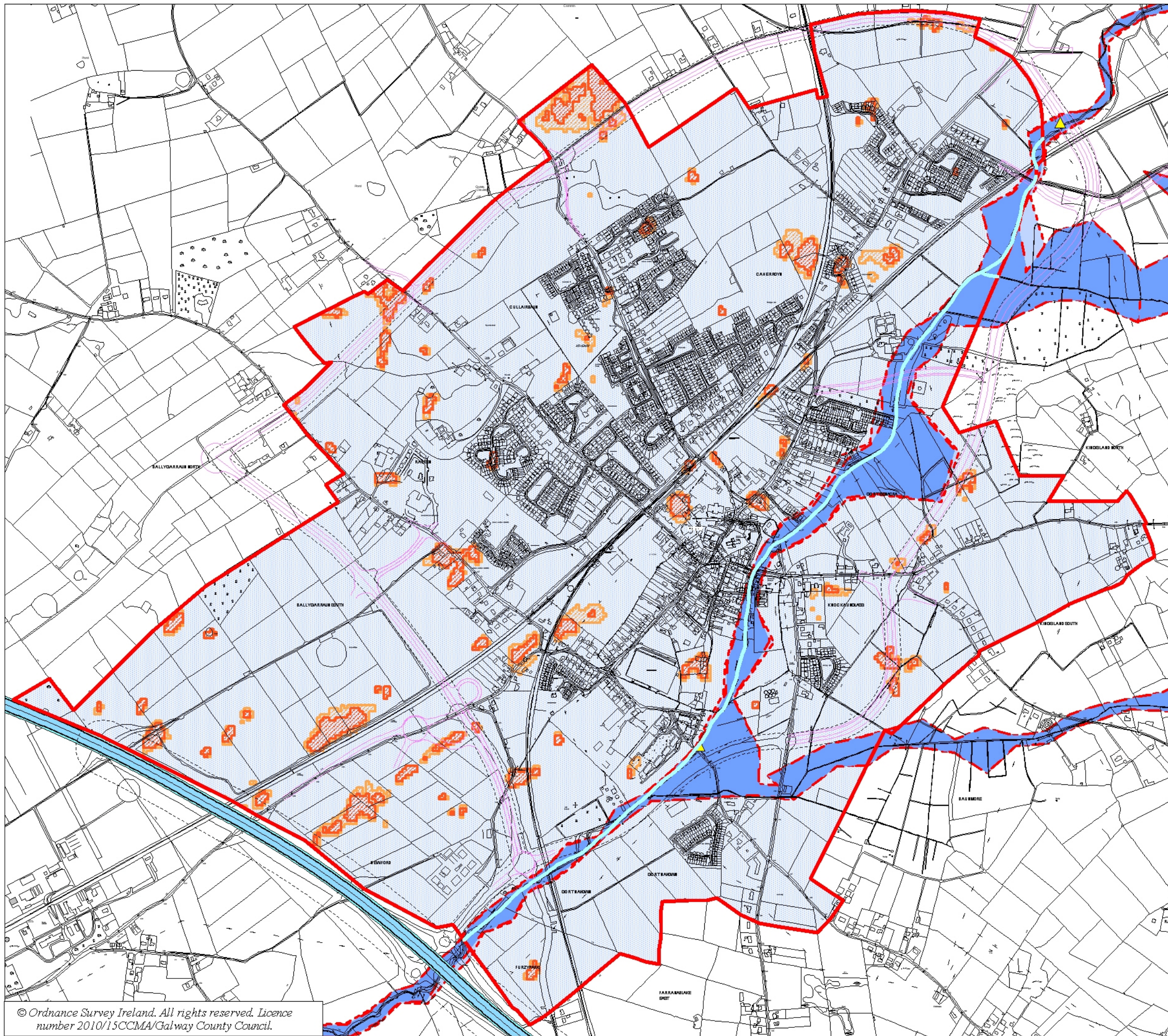
Objective Key	Objective Description
CF2	S.3.3.2 Community Facilities & Amenity Objectives Indicative locations for new school provision
TI 3	S.3.6.2 Sustainable Transportation <ul style="list-style-type: none"> Support the provision of an integrated public transportation facility/hub & ancillary services. Enhance public access between the Railway Station & its existing parking facilities. Support the provision of parking facilities in proximity to public transportation nodes
TI 8	Facilitate provision of pedestrian crossings adjacent to schools, at other appropriate locations e.g. Atherry Rail Station to its existing parking facilities.
TI 17	S.3.6.2 Roads, Streets & Parking Support the development of - road schemes/improvements, road bridges, road/rail crossings within the Plan Area.
TI 18	M6 Ballinacree - Galway: <ul style="list-style-type: none"> Min 90m building setback in areas where a speed limit greater than 50kph applies (>50kph).
TI 19	Atherry Relief Road/Relief Streets: <ul style="list-style-type: none"> Min 25m setback in areas where a speed limit greater than 50kph applies (>50kph). No minimum building setback in areas of 50kph or less. Provide a 3m wide cycleway/pedestrian way as part of the provision of the Atherry Relief Road.
TI 20	Provide a new road and over-bridge from the M6 link road to the Cashla Road as part of the Atherry Relief Road/Relief Streets.
TI 21	Reserve a cycleway/pathway from Business and Technology Park (BT) zoning, Cashla Road, IDA ring road to the Railway Station. Support the development of other pedestrian and cycling linkages where appropriate
TI 23	Improve the bridges over the railway lines by making better provision for pedestrian access.
TI 24	Provide long stay parking facilities at Backlawn & Knockaunglass.
TI 25	Provide a walkway along River Clarin. Continue to provide a walkway around the historic Town Walls.
UI 3	S.3.6.2 Water Supply, Wastewater & Surface Water Provide and protect a 100m buffer around the wastewater treatment plant site. Protect buffer zones around any other treatment plant in the town as appropriate.
UI 13	Protect waterbodies and watercourses within the Plan Area from inappropriate development, including rivers, streams, associated undeveloped riparian strips and natural floodplains. This will include a 10m environmental management buffer on either side of the River Clarin and its tributary, measured from the near river bank. Prevent culverting/realignment, where possible.
UD 6	3.7.2 Urban Design & Place-making Protect all views/prospects of significance - the Town Walls, the Castle, St. Mary's Collegiate Church, Dominican Priory or others that will block or interfere with a significant view or prospect.
HC 9	3.8.2 Built Heritage & Cultural Heritage Require archaeological assessment for development within or in close proximity (30m) of the Zone of Archaeological Potential, within 30m of other recorded monuments (RMPs) and in close proximity of any national monuments including Atherry's historic walls.
NH 5	3.9.2 Natural Heritage & Biodiversity Support the protection of biodiversity and ecological connectivity including woodlands, trees, hedgerows, rivers, streams, wetlands, stone walls, other landscape features such as Esker Riada, where these form part of the ecological network. Seek to retain and/or incorporate these natural features into developments, in order to avoid ecological fragmentation and maintain ecological corridors
NH 7	Limit development within the environmental management buffer. Seek to ensure that a minimum setback of 10 metres is maintained on either side of the River Clarin, save for exceptional circumstances & where this setback is not feasible.
NH 8	Protect important tree clusters and hedgerow in the Plan Area and ensure that development proposals take cognisance of significant trees/tree stands. Seek to retain natural boundaries including stone wall, hedgerow and tree boundaries, where possible.

- Local Area Plan Boundary
- Open Space / Recreation & Amenity (see specific objective CF 4)
- ED Indicative locations for school provision
- Important Tree Stands
- - - Indicative Cyclepath / Walkways
- 10m River Clarin Environmental Management Buffer
- Eskers (Esker Riada)
- Historic Town Walls
- ▽ Protected Views
- Proposed Atherry Relief Road / Relief Streets
- M6 Motorway
- (ACA) Architectural Conservation Area
- (ZAP) Zone of Archaeological Potential

Note:
This map should be read in conjunction with Maps 1A/1B Land Use Zoning; Maps 3A/3B Indicative Flood Risk Management Areas and the policies, objectives and guidelines outlined with Section 2 and Section 3 of the plan, including those in relation to land use management and zoning.



**ATHERRY LAP 2012
PLAN ADOPTED 25/6/2012
MAP 2B SPECIFIC OBJECTIVES
TOWN CENTRE**



- Proposed Plan Boundary
- Indicative Flood Zone A (PFRA Fluvial 100)
- Indicative Flood Zone B (PFRA Fluvial 1000)
- Pluvial Indicative (PFRA)
- Pluvial Extreme (PFRA)
- Indicative Flood Zone C (Areas not covered by A or B)
- Recorded / Historical Flood Events
- M6 Motorway
- Proposed Athlery Relief Road / Relief Streets
- River Clarin

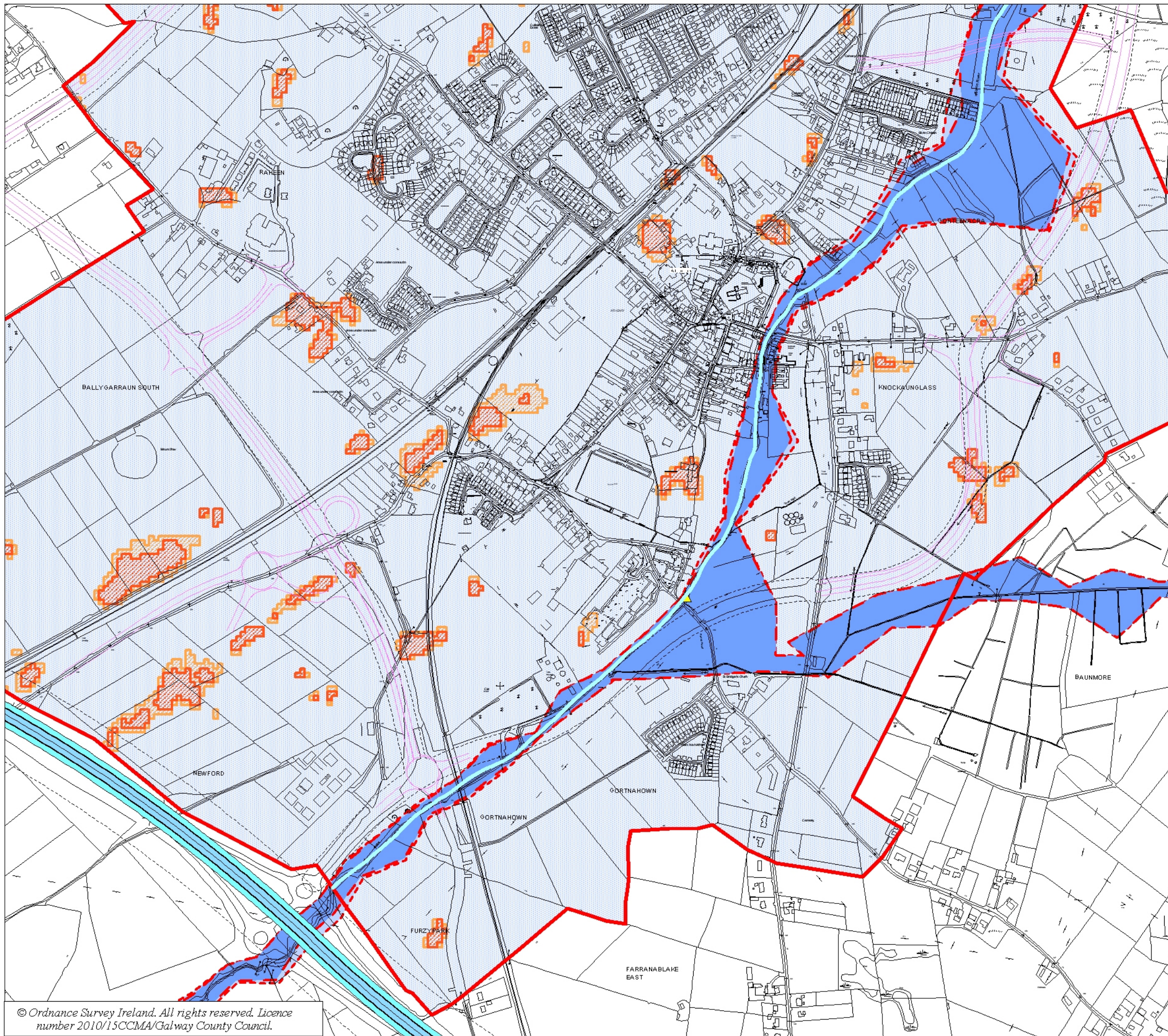
Important User Note:
 The flood information presented in these Maps (Maps 3A/3B) have been compiled based on OPW Preliminary Flood Risk Assessment (PFRA), research carried out on behalf of Galway County Council (Strategic Flood Risk Assessment; SFRA) and tested against knowledge of flood events in the area. They indicate broadly areas that may be prone to flooding, and form part of the flood risk assessment and considerations for the Plan.
 The flood extents on the OPW PFRA Maps are based on broad-scale simple analysis and may not be accurate for a specific location/use. Information on the purpose, development and limitations of the OPW PFRA Maps are available in the relevant report (see www.cfram.ie). Users should seek professional advice if they intend to rely on the OPW PFRA Maps in any way.

Note:
 This map should be read in conjunction with Maps 1A/1B Land Use Zoning; Maps 2A/2B Specific Objectives and the policies, objectives and guidelines outlined with Section 2 and Section 3 of the plan, including those in relation to flood risk management and assessment.



**ATHLERY LAP 2012
 PLAN ADOPTED 25/6/2012
 MAP 3A INDICATIVE FLOOD RISK
 MANAGEMENT AREAS**

© Ordnance Survey Ireland. All rights reserved. Licence number 2010/15CCMA/Galway County Council.



- Local Area Plan Boundary
- Indicative Flood Zone A (PFRA Fluvial 100)
- Indicative Flood Zone B (PFRA Fluvial 1000)
- Pluvial Indicative (PFRA)
- Pluvial Extreme (PFRA)
- Indicative Flood Zone C (Areas not covered by A or B)
- Recorded / Historical Flood Events
- M6 Motorway
- Proposed Athery Relief Road / Relief Streets
- River Clarin

Important User Note:
 The flood information presented in these Maps (Maps 3A/3B) have been compiled based on OPW Preliminary Flood Risk Assessment (PFRA), research carried out on behalf of Galway County Council (Strategic Flood Risk Assessment; SFRA) and tested against knowledge of flood events in the area. They indicate broadly areas that may be prone to flooding, and form part of the flood risk assessment and considerations for the Plan.
 The flood extents on the OPW PFRA Maps are based on broad-scale simple analysis and may not be accurate for a specific location/use. Information on the purpose, development and limitations of the OPW PFRA Maps are available in the relevant report (see www.cfram.ie). Users should seek professional advice if they intend to rely on the OPW PFRA Maps in any way.

Note:
 This map should be read in conjunction with Maps 1A/1B Land Use Zoning; Maps 2A/2B Specific Objectives and the policies, objectives and guidelines outlined with Section 2 and Section 3 of the plan, including those in relation to flood risk management and assessment.



**ATHERY LAP 2012
 PLAN ADOPTED 25/6/2012
 MAP 3B INDICATIVE FLOOD RISK
 MANAGEMENT AREAS
 TOWN CENTRE**

© Ordnance Survey Ireland. All rights reserved. Licence number 2010/15CCMA/Galway County Council.